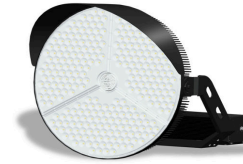


FEATURES

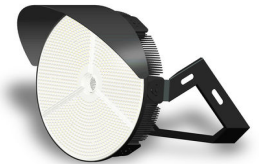
- High protection level up to IP67
- High impact resistance, meeting IK10
- Low EPA design, anti 17-level wind power
- High vibration resistance, meeting 3G standards
- Aluminum powder coated fixture
- 304 stainless steel mounting brackets and hardwares available
- LED Lifespan: 50,000 hours
- Warranty: 7-year limited for 100-277V version, 5-year warranty for 347-480V version

APPLICATIONS

- Sport Fields
- Stadiums
- Entrance & Roadway
- Industrial Facilities
- Airports
- Shipping Docks



Integral Version(Std.)

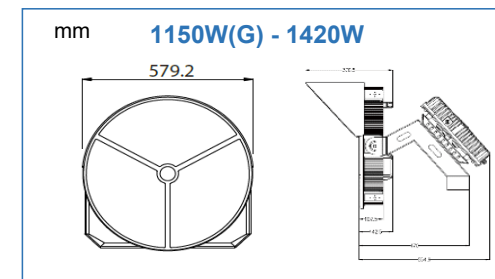
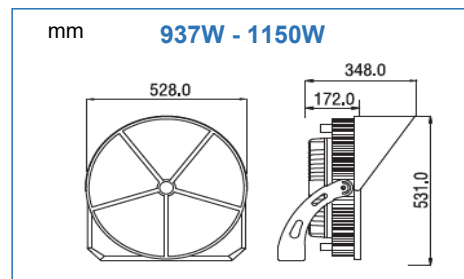
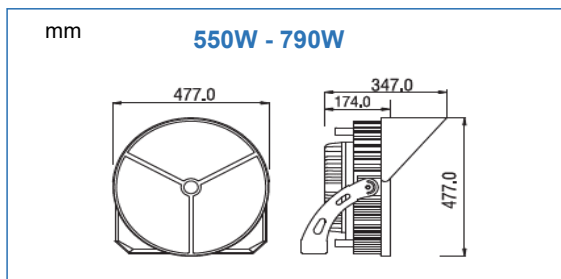
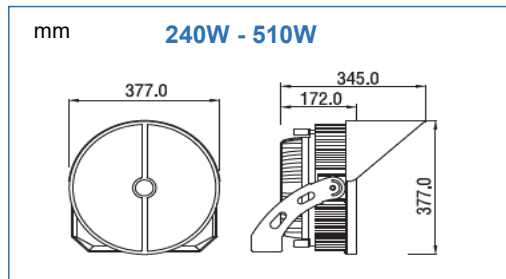


Remote Version

SPECIFICATIONS

Product Pictures														
Model No.	4H240L	4H320L	4H410L	4H480L	4H535L	4H550L	4H600L	4H735L	4H790L	4H937L	4H1080L	4H1200L	4H1200GL	4H1420L
Power	240W	320W	410W	480W	510W	550W	600W	735W	750W	937W	1,080W	1,150W	1,150W	1,420W
Lumen	35,520 LM	48,000 LM	58,630 LM	66,240 LM	69,360 LM	80,300 LM	86,400 LM	100,695 LM	102,750 LM	134,928 LM	151,200 LM	157,550 LM	152,950 LM	183,180 LM
Efficacy	148 LM/W	150 LM/W	143 LM/W	138 LM/W	136 LM/W	146 LM/W	144 LM/W	137 LM/W	137 LM/W	144 LM/W	140 LM/W	137 LM/W	133 LM/W	129 LM/W
Voltage	100-277V 347-480V	100-277V 347-480V	100-277V 347-480V	100-277V 347-480V	100-277V 347-480V	100-277V 347-480V	100-277V 347-480V	100-277V 347-480V	100-277V 347-480V	100-277V 347-480V	100-277V 347-480V	100-277V 347-480V	100-277V 347-480V	100-277V 347-480V
Beam Angle	16°/40°/60°/90°	16°/40°/60°/90°	16°/40°/60°/90°	16°/40°/60°/90°	16°/40°/60°/90°	16°/40°/60°	16°/40°/60°	16°/40°/60°	16°/40°/60°	16°/40°/60°	16°/40°/60°	16°/40°/60°	16°/40°/60°	10°/25°
Color Temp.	40K/50K/57K	40K/50K/57K	40K/50K/57K	40K/50K/57K	40K/50K/57K	40K/50K/57K	40K/50K/57K	40K/50K/57K	40K/50K/57K	40K/50K/57K	40K/50K/57K	40K/50K/57K	40K/50K/57K	40K/50K/57K
CRI	70(STD), 80/90 Optional	70(STD), 80/90 Optional	70(STD), 80/90 Optional	70(STD), 80/90 Optional	70(STD), 80/90 Optional	70(STD), 80/90 Optional	70(STD), 80/90 Optional	70(STD), 80/90 Optional	70(STD), 80/90 Optional	70(STD), 80/90 Optional	70(STD), 80/90 Optional	70(STD), 80/90 Optional	70(STD), 80/90 Optional	70(STD), 80/90 Optional
SPD	20kV/40kV	20kV/40kV	20kV/40kV	20kV/40kV	20kV/40kV	20kV/40kV	20kV/40kV	20kV/40kV	20kV/40kV	20kV/40kV	20kV/40kV	20kV/40kV	20kV/40kV	20kV/40kV
Fixture Color	Bronze	Bronze	Bronze	Bronze	Bronze	Bronze	Bronze	Bronze	Bronze	Bronze	Bronze	Bronze	Bronze	Bronze
Driver Brand	Mean Well	Mean Well	Mean Well	Mean Well	Mean Well	Mean Well	Mean Well	Mean Well	Mean Well	Mean Well	Mean Well	Mean Well	Mean Well	Mean Well
Product Weight	13.4 kgs	13.8 kgs	14.6 kgs	14.6 kgs	14.8 kgs	19.1 kgs	19.2 kgs	20.1 kgs	20.2 kgs	28.5 kgs	31.5 kgs	32.0 kgs	37.8 kgs	38.5 kgs
IP Rating	IP67	IP67	IP67	IP67	IP67	IP67	IP67	IP67	IP67	IP67	IP67	IP67	IP67	IP67
EPA Rating	0.87 ft²	0.87 ft²	0.87 ft²	0.87 ft²	0.87 ft²	0.97 ft²	0.97 ft²	0.97 ft²	0.97 ft²	1.24 ft²	1.24 ft²	1.24 ft²	1.42 ft²	1.42 ft²
Operating Temp.	-40°C to +40°C	-40°C to +40°C	-40°C to +40°C	-40°C to +40°C	-40°C to +40°C	-40°C to +40°C	-40°C to +40°C	-40°C to +40°C	-40°C to +40°C	-40°C to +40°C	-40°C to +40°C	-40°C to +40°C	-40°C to +40°C	-40°C to +40°C
Average Lifespan	50,000 hours	50,000 hours	50,000 hours	50,000 hours	50,000 hours	50,000 hours	50,000 hours	50,000 hours	50,000 hours	50,000 hours	50,000 hours	50,000 hours	50,000 hours	50,000 hours
Compliance	UL/CUL / LM79, LM80, IES													
Warranty	7-year limited for 100-277V version, 5-year warranty for 347-480V version													

DIMENSIONS



ORDERING INFORMATION

Order Example: 4H600L50BR065SVIA= 600W, 100-277V, 5000K, Bronze, 60°, Cree Chip, SPD, Visor, Integral System, A type Air vents.

4H	535	L	50	BR	06	3	SVIA
Series	Wattage	Voltage	CCT	Finish	Beam Angle	LED Brand	Options
4H= Gen.4 High Output LED Sports Light / LED High-Mast Light	240= 240W 320= 320W 410= 410W 480= 480W 535= 510W 550= 550W 600= 600W 735= 735W 790= 750W 937= 937W 1080= 1,080W 1200= 1,150W 1200G= 1,150W(50°C) 1420= 1,420W	L= 100-277V H= 347-480V	40= 3000K 50= 5000K 57= 5700K	BR= Bronze(Std.) WH= White BK= Black	01= 16° 04= 40° 06= 60° 09= 90°	5= CREE	D= 0-10V Dimming P= Photocell sensor S= Surge Protector(SPD) V= Visor G= Glare Control Shield I= Integral System(Std.) R= Remote System A=Type A Ventilation Ring B=Type B Ventilation Ring Blank=None

Due to our continued efforts to improve our products, product specifications are subject to change without notice.

Phone: 86-755-8340-5100 | Fax: 86-755-8224-7517 | Add: Shenzhen, China

For more information please visit our website: www.greeninova.com

REV. 9/25/2020